

Mum,

Are you thinking about having an abortion?

We know you are probably upset and confused. Even if you have already had medication, it is not too late to save the life of your **BABY**. Please don't do anything now that will **HURT YOUR CHILD** because you will later regret it.

Please feel free to come and talk with us.

We are waiting to **LISTEN** and to **HELP** you.

Call our London Centre
020 7724 6465

Counselling and further assistance are available to you.

**IF YOU ARE NOT
A RESIDENT HERE ...**

Many other countries have groups which offer similar help and support. We can put you in touch with these groups.

Call our London Centre
020 7724 6465



Believe in
Yourself
&
Follow
Your Heart



*Please choose life for your
baby!*

The First Three Months

The Baby at the End of 4 Weeks



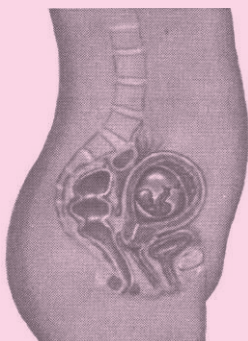
- about 1/4 inch
- about 7/10.000 oz.
- heart pulsates and pumps blood
- digestive system, back bone and spinal cord begin to form, small buds appear for arms and legs

The Baby at the End of 8 Weeks



- about 1 1/8 inches
- about 1/4 oz.
- has a face, eyes, nose, legs and tongue; eyelids are fused.
- brain has taken shape
- internal organs developing
- limbs begin to form arms, elbows, forearms, hands, thighs, knees, feet

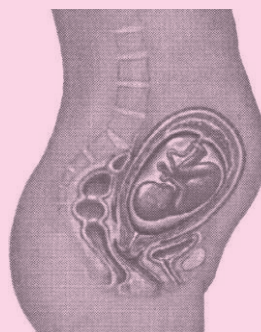
The Baby at the End of 12 Weeks



- about 3 inches, 1 1/2 oz.
- hands, fingers, legs, feet and toes are fully formed
- eyes almost fully developed, lids are still fused; tooth sockets & buds in the jaw bones form
- baby possesses most of its organs & tissues
- heartbeat can be detected with special instrument

The Second Three Months

The Baby at the End of 4 Months



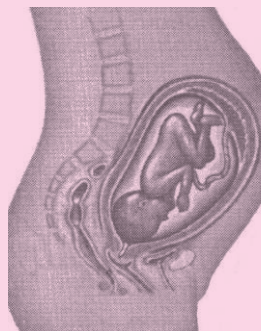
- about 6 1/2 to 7 inches
- about 7 oz.
- muscles and bones are formed
- mother may feel movement
- heartbeat is strong
- skin is bright pink, transparent
- ears, eyes, nose, mouth take final appearance

The Baby at the End of 5 Months



- about 10 to 12 inches
- about 1 lb.
- internal organs maturing at a fast rate
- eyelids still fused
- eyebrows and hair on the head have appeared

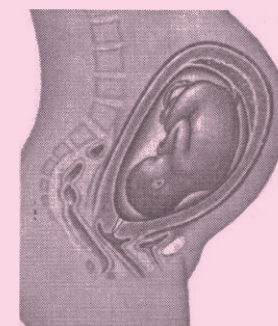
The Baby at the End of 6 Months



- about 11 to 14 inches
- about 1 3/4 lb.
- skin still bright pink, wrinkled, covered with a heavy protective creamy coating
- eyelids separate, eyelashes form
- fingernails grow to ends of fingers

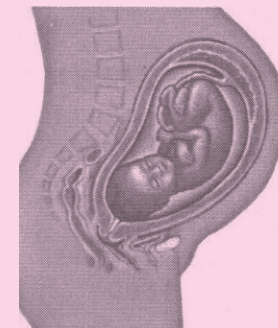
The Final Three Months

The Baby at the End of 7 Months



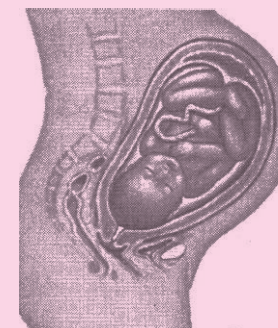
- about 14 to 17 inches
- about 2 1/2 to 3 lb.
- skin still wrinkled and red
- all vital organs formed: further development is mainly in size

The Baby at the End of 8 Months



- about 16 1/2 to 18 inches
- about 4 1/2 to 5 1/2 lb.
- head bones are soft and flexible
- fat deposits under the skin eliminate wrinkling

The Baby at the End of 9 Months



- about 20 inches
- about 7 1/4 to 7 1/2 lb.
- skin covered with creamy coating; fine hair is gone
- baby is now fully developed and ready for life outside the womb